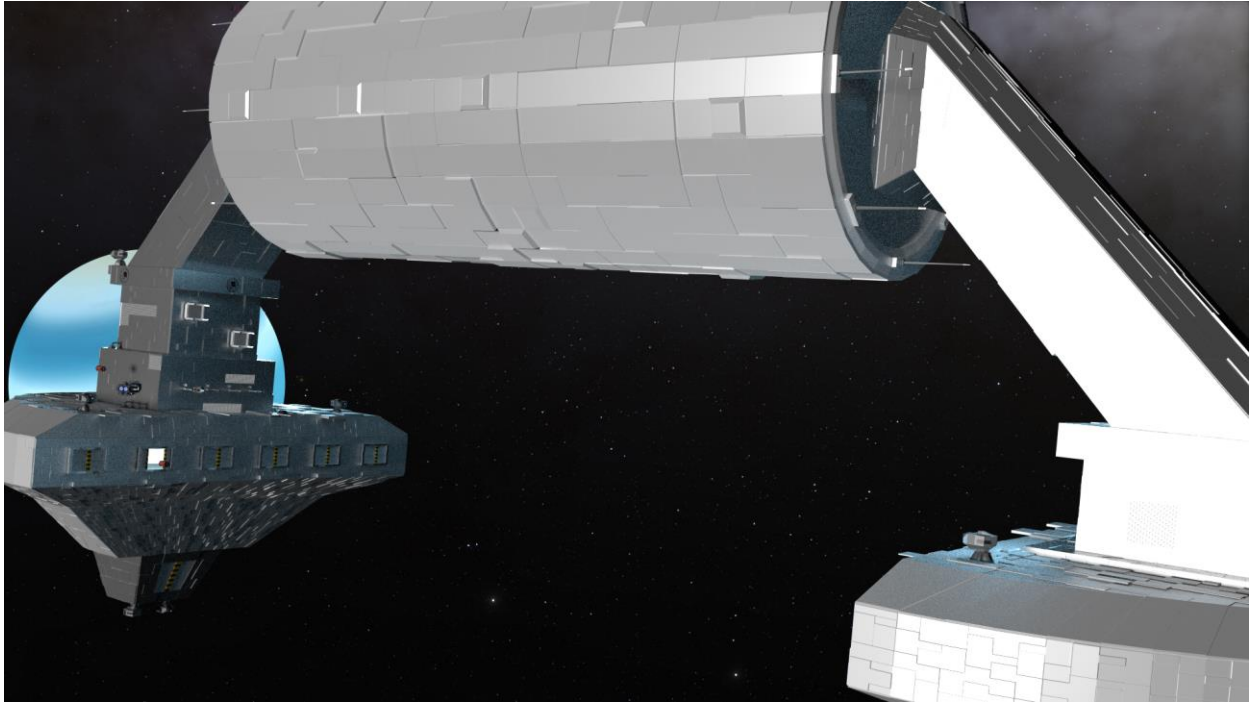


## Two Clusters – Uranus outpost, Rev 1.1



Uranus outpost started off as a science outpost at the planet Uranus. It soon developed into a trade outpost and later into a space colony.

### History

Initial construction of Uranus science outpost began in year 5012 as a part of “Outer Sol terraforming project”. The primary object of the outpost at that time was to study Uranus and Neptune more closely and obtain H<sub>2</sub>O from their atmosphere. Secondary object was to study Pluto and plan a terraforming project. At this point, a terraforming project plan for Saturn was completed already.

The science outpost was altered to become a water supply depot once Saturn terraforming commenced on year 5100. The outpost became responsibly for supplying Saturn inhabitants with pure water at that time.

The outpost also supplied water to Pluto as well after the planet was terraformed. The major purpose of the outpost had been to supply water for over two thousand years.

Mankind's adventure to outer stars during Gawain Klisis' regime saw a change in the purpose of Uranus outpost. It progressively turned into a trade hub and at the same time, its importance grew. This was when the "2bn aid package" was signed on to supply the station with necessary credit to operate.

**[Kain and Suu arc] [5] [He who stands alone] [9616]** deals with the 2bn aid package. The legislation basically injects the station with 2 billion credit per year in addition to its own earnings. Traditionally, the amount was more than enough to allow Uranus station administrators to embezzle.

While the station blossomed somewhat as a trade outpost, until Kain took over, the station suffered from lack of proper administration. No previous administrators paid enough attention to run things smoother. As a result, number of permanent residents on the station was low.

When Kain took over, the situation changed. He poured everything into boosting the outpost's economy and the station grew substantially and eventually gained a status of being a space colony.

After Kain's regime, the colony fell into Saturn President Gaer's control.

## **Structure**

The outpost was largely modular with new blocks being added as needed. The station had a dedicated residential block for permanent residents. The residential block had pseudo gravity in centrifugal force.

A large hollow cylinder would rotate and created push down force to its outer shell where homes and businesses were built on. Expansion of the residential module was as simple as building more floors on its outer shell.

Rest of the station faked gravity by using magnetic fields and iron boots.

As a trade hub in what was considered semi-deep space, the station spotted two independent docking modules and had a capacity of docking 1,000 USF Courage simultaneously. The station was also fully self-sustaining. Basic materials came from mining random asteroids floating nearby and from Uranus as well. Formerly as a water supply depot, water supply was never an issue for the colony as water was aplenty in Uranus and Neptune.

## **The first line of defense and golden era**

Until Kain was assigned to the station, the outpost was never considered to have any significance in United Sol navy. It was when Juron commanded an invasion for the second time on United Sol, people realized that Uranus outpost was a vital piece in defending Sol system.

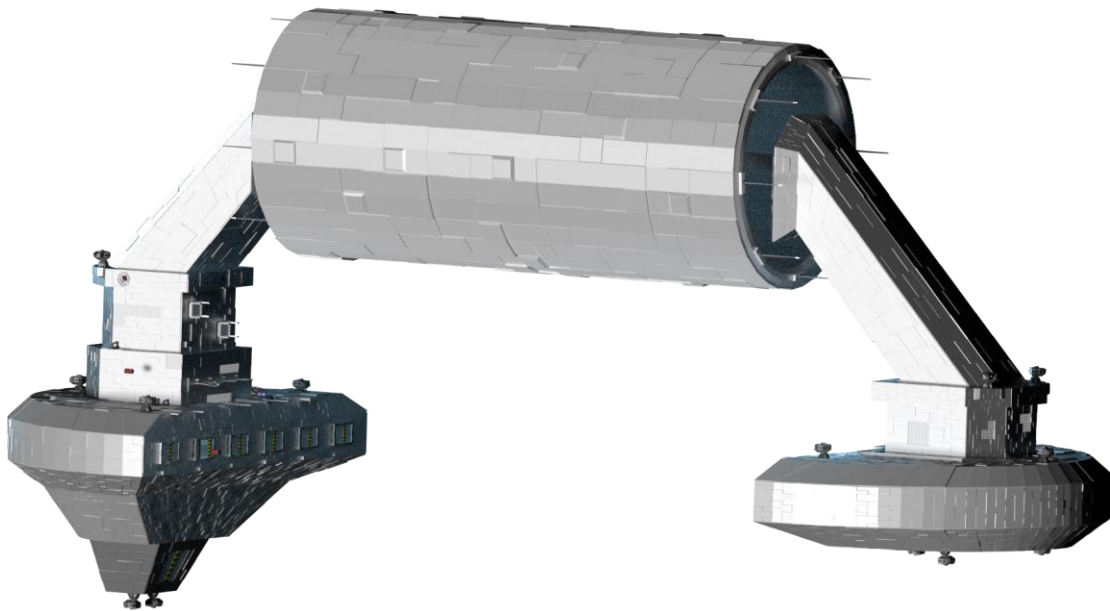
Kain's subsequent promotion to Admiral also meant that Uranus outpost became a vital place in Sol system. This started sort of a golden era for the outpost as citizens flocked into the outpost, often fleeing from the Bau's careless rule and economical mishaps. Most migrants came from Moon where its economy was in total collapse.

This enabled the outpost to have more than a million permanent residents which upgraded the outpost's title to a colony.

Thus, Uranus colony was born. At the same time, a new term referring permanent residents on the station was created as well: the Uranians.

## **Detailed explanation of station structure by using Blender 3D model**

The model you are going to see was created entirely by myself. It had taken me about 5 weeks to finish the model. (Spending about 3 hours on it each day)



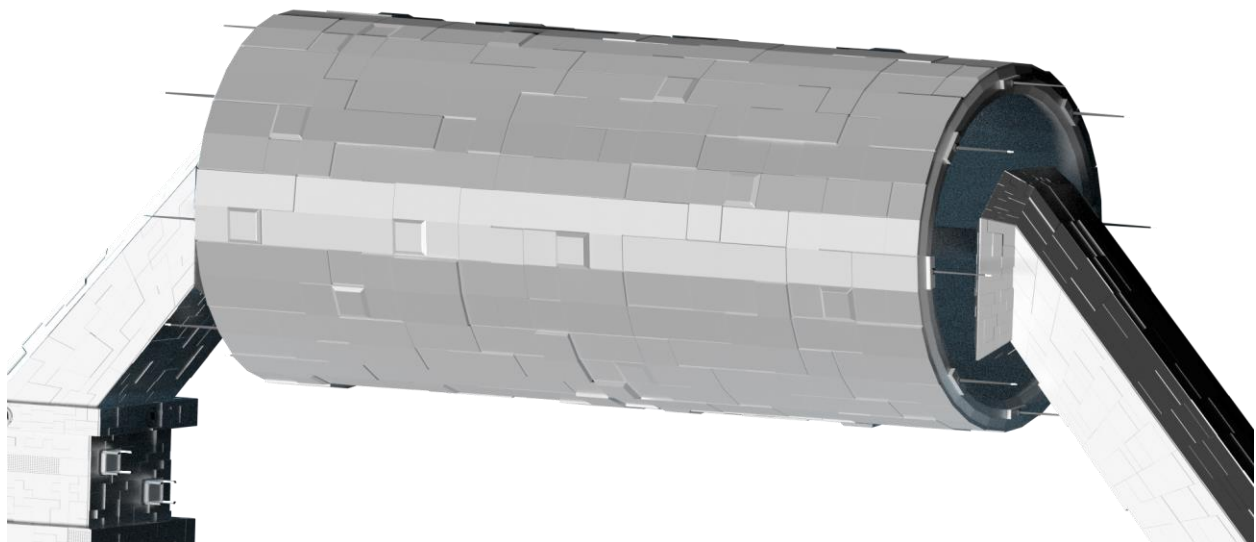
The station is in a flipped U shape with a single, but large, docking module on both ends.

The left docking bay is the primary docking bay. The primary docking bay provides additional services such as towing, on-site ship repairs, and such. The structure above the docking bay is where the main bridge is. It is located deep in center of the structure.



The primary docking bay and its structure above are the main place for commerce.

The primary docking bay also features an additional freighter docking bay. This bay is used to receive only supply freights. Large freighters often exceed size limitation of regular docking bay doors.



The residential module uses centrifugal force to create gravity.

To understand centrifugal force, simply imagine you swinging a bucket full of water in continuous circular motion. Water will not fall down and still stick to the bottom of the bucket as long as the swinging motion is in effect. Centrifugal force is exactly that.

However, centrifugal force is not true gravity. It acts similar in many ways, but it's not true gravity. For an example, the closer an object approaches its center of rotation, the less fake gravity it will receive. Additionally, an object will not fall in a straight line. This effect may not be noticeable in a small fall distance however.

As a result, residents live on outer shell of the inhabitant module and expanding the module is as simple as building further floors on top of existing outer shell.